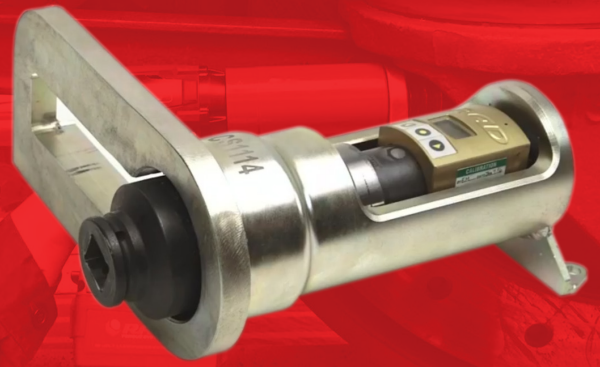


SMALL CALIBRATION SYSTEM 1500

Part Number: **23442**



LIGHTER **FASTER** STRONGER

The RAD Calibration Systems have earned their place in calibration laboratories worldwide because of their high accuracy and repeatability.

SPECIFICATIONS

Torque Ranges: 75 ft. lbs. - 1500 ft. lbs.

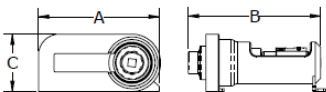
Weight: 4.0 lbs.

Square Drive: 1.0"

Repeatability: +/-1%

Accuracy: +/-1%

DIMENSIONS



DIMENSION A	DIMENSION B	DIMENSION C
11.75"	11.53"	5.50"



Non
Impacting



Safe &
Reliable



Class 1 Division
2 Group A, B,
C, D T4



Accredited
ISO/IEC 17025



NEW WORLD TECHNOLOGIES INC

#100 - 30722 MARSHALL RD | ABBOTSFORD, BC V2T 0H9 | CANADA
604.852.0405 | INFO@RADTORQUE.COM | RADTORQUE.COM