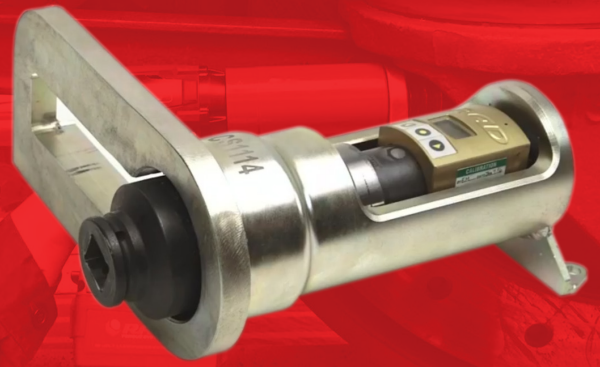


# SMALL CALIBRATION SYSTEM 3500

Part Number: **23443**



## LIGHTER **FASTER** STRONGER

The RAD Calibration Systems have earned their place in calibration laboratories worldwide because of their high accuracy and repeatability.

### SPECIFICATIONS

Torque Ranges: 175 ft. lbs. – 3500 ft. lbs.

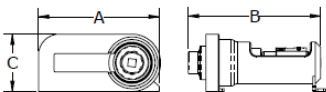
Weight: 10.0 lbs.

Square Drive: 1.5"

Repeatability: +/-1%

Accuracy: +/-1%

### DIMENSIONS



DIMENSION A	DIMENSION B	DIMENSION C
14.50"	13.53"	7.00"



Non  
Impacting



Safe &  
Reliable



Class 1 Division  
2 Group A, B,  
C, D T4



Accredited  
ISO/IEC 17025



## NEW WORLD TECHNOLOGIES INC

#100 - 30722 MARSHALL RD | ABBOTSFORD, BC V2T 0H9 | CANADA  
604.852.0405 | [INFO@RADTORQUE.COM](mailto:INFO@RADTORQUE.COM) | [RADTORQUE.COM](http://RADTORQUE.COM)